

Type **TK26 CNG**

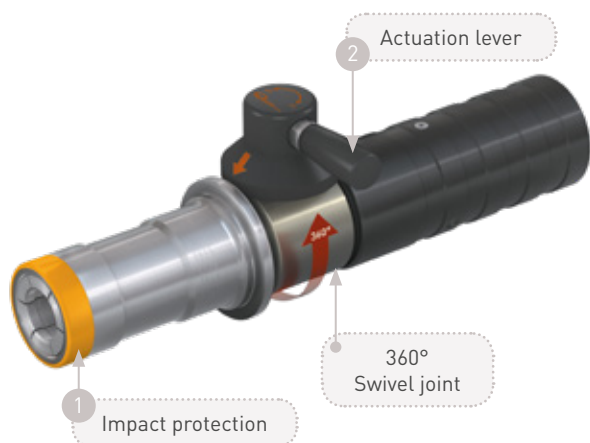
CNG Fueling Nozzle

for buses and trucks at self-service fueling stations



General

DESCRIPTION



Features

- Super light
- Compatible with receptacles acc. to ISO 14469-2
- WEH® EASY-TURN 360° swivel joint for actuation lever
- Easy operation
- Extremely high flow rate → short filling times
- Recirculation of the vented gas
- Plastic thermal protection
- WEH® Jaw locking mechanism
- Colour coded impact protection (3,000 psi black, 3,600 psi yellow)
- High-grade materials
- Coding for pressure range / gas type

The TK26 CNG fueling nozzle is very light in weight and therefore easy to operate. The integrated swivel joint is located at the actuation lever and can easily be turned into the optimal actuating position. The compact actuation lever needs less effort to actuate the nozzle.

Safety

The TK26 CNG offers optimum safety to the operator.

The fueling nozzle remains connected to the receptacle until the gas between inlet valve and receptacle is depressurized. To achieve optimum performance it is recommended that the TK26 CNG fueling nozzle is used with the WEH® TN5 CNG receptacle.

Application

Fueling nozzle for CNG fast filling of buses and trucks at self-service fueling stations to be used with WEH® TN5 CNG receptacles acc. to ISO 14469-2.

TECHNICAL DATA

Characteristic	Basic version	Options
Nominal bore DN	12 mm	On request
Pressure range	C200 acc. to ISO 14469-2 PN = 200 bar (3,000 psi) PS = 300 bar PT = 450 bar (black) PN = 250 bar (3,600 psi) PS = 350 bar PT = 525 bar (yellow)	
Temperature range	-40 °F up to +185 °F	On request
Material	Corrosion resistant	On request
Sealing material	Natural gas compatible	On request
Design	With plastic thermal protection and gas recirculation	On request
Weight	7.50 lbs.	
Registration	Acc. to ISO 14469-2*	

* The NGV1 standard does not include the size 2 refueling interface. The ISO 14469-2 can be used as a follower of the ANSI/NGV1 for the size 2 refueling interface. The components are tested in accordance with ISO14469-2. The test program is similar to the NGV1 but displays the different profile and size of the components.

Ordering

ORDERING | Fueling nozzle TK26 CNG

approx. dimensions (mm)



Part No.	Description	Pressure (PN)	Inlet B (external thread)	Gas recirculation C (external thread)
C1-70708-X01	TK26 CNG	3,000 psi (black)	UNF 7/8"-14*	UNF 9/16"-18*
C1-102475-X01	TK26 CNG	3,600 psi (yellow)	UNF 7/8"-14*	UNF 9/16"-18*

* acc. to SAE J514, 37°

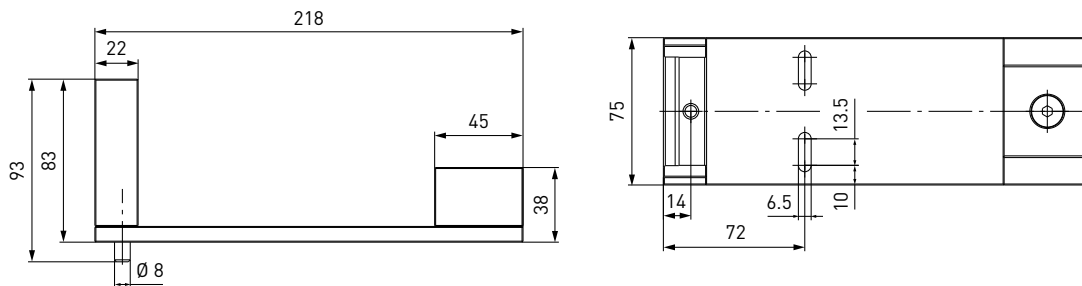
Please see page 62 in catalog no. 15 onwards for complete hose assemblies consisting of fueling nozzle, hose set and breakaway coupling.

ACCESSORIES

The following accessories are available for type TK26 CNG:

Dispenser mounting

Mounting for safe attachment of the fueling nozzle to the dispenser. Optionally with or without switch actuation.
Design: Aluminium, stainless steel

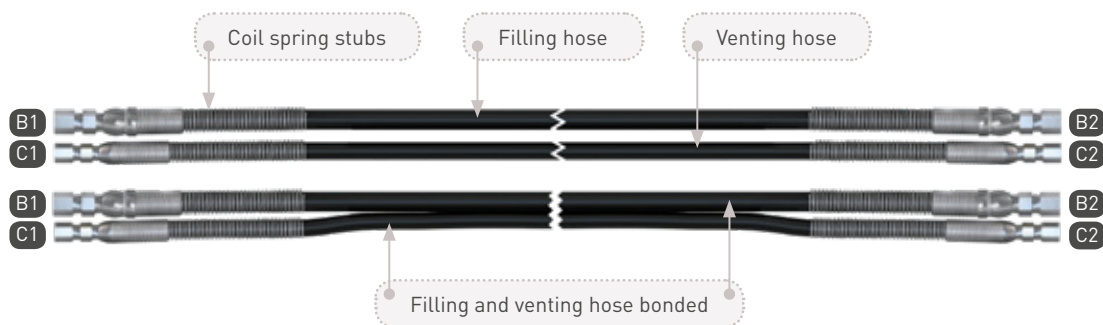


Part No.	Description
C1-94805	Mounting (switch actuated)
On request	Mounting (not switch actuated)

Ordering

Hose sets TK26 CNG - TSA5 CNG (filling and venting hose)

Filling and venting hoses for connecting fueling nozzle and type TSA5 CNG breakaway coupling, complete with fittings and press-fittings supported by coil spring stubs. Available as single or twin hoses (permanently bonded).



Part No.	Filling hose B1/B2 (internal thread)	Venting hose C1/C2 (internal thread)	Hose length
C1-101749	UNF 7/8"-14* internal thread	UNF 9/16"-18* internal thread	3 m
C1-102079	UNF 7/8"-14* internal thread	UNF 9/16"-18* internal thread	4 m
C1-102508	UNF 7/8"-14* internal thread	UNF 9/16"-18* internal thread	5 m

* acc. to SAE J514, 37°

All designs also available with permanently bonded filling and venting hose. Please contact us!

Hose sets TK26 CNG - TSA6 CNG (filling and venting hose)

Filling and venting hoses for connecting fueling nozzle / dispenser and type TSA6 CNG inline breakaway coupling, complete with fittings and press-fittings supported by coil spring stubs.

Part No.	Filling hose B1/B2 (internal thread)	Venting hose C1/C2 (internal thread)	Hose length
On request	UNF 7/8"-14* internal thread	UNF 9/16"-18* internal thread	2.5 0.5 m
On request	UNF 7/8"-14* internal thread	UNF 9/16"-18* internal thread	3.5 0.5 m
On request	UNF 7/8"-14* internal thread	UNF 9/16"-18* internal thread	4.5 0.5 m

* acc. to SAE J514, 37°

All designs also available with permanently bonded filling and venting hose. Please contact us!

Ordering

Fittings

Stainless steel fittings for connecting the media inlet 'B' to the filling hose or the gas recirculation inlet 'C' to the venting hose.

Part No.	Description	Connection fueling nozzle	Connection filling hose
C1-97227	Fitting	UNF 9/16"-18* internal thread	UNF 9/16"-18* internal thread
C1-79538	Fitting	UNF 9/16"-18* internal thread	UNF 9/16"-18 ** internal thread
E80-647P	Fitting	UNF 9/16"-18* internal thread	UNF 7/8"-14* external thread
C1-66850	Fitting	UNF 9/16"-18* internal thread	UNF 3/4"-16* external thread
C1-65592	Fitting	UNF 9/16"-18* internal thread	NPT 1/4" internal thread
E80-52705	Fitting	UNF 7/8"-14* internal thread	UNF 9/16"-18* external thread
C1-105411	Fitting	UNF 7/8"-14* internal thread	UNF 7/16"-20* external thread
C1-48976	Fitting	UNF 7/8"-14* internal thread	NPT 1/4" external thread

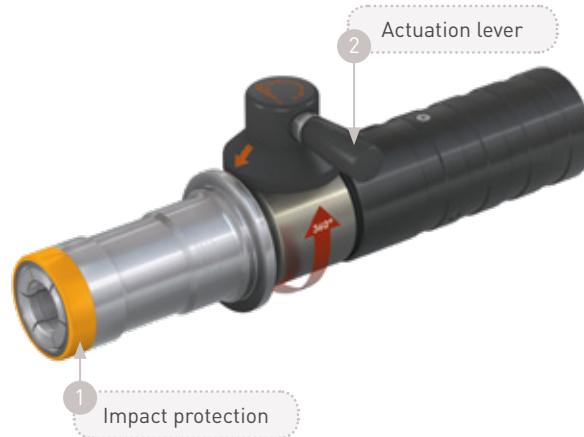
* acc. to SAE J514, 37°

** acc. to SAE J1926

Please see page 126 in catalog no. 15 onwards for a detailed overview on all available fittings.

Spare parts

Various parts are available as spares for type TK26 CNG:



Part No.	Description
E80-94808	1 Impact protection (200 bar / 3,000 psi, black)
E80-106832	1 Impact protection (250 bar / 3,600 psi, yellow)
W72504	2 Actuation lever
E99-44923	Maintenance spray

Other products

OTHER PRODUCTS

You will find more products in our current catalog no. 15



Further information on our homepage
www.weh.com

Abbreviations/Definition

Explanation of abbreviations see technical appendix in the catalogue or www.weh.com

Safe product selection

Our WEH® Products are designed to be operated by qualified professional users (insofar as WEH® Products are also designed to be operated by other users in individual cases, this is explicitly stated in the corresponding operating instructions). You alone are responsible for the selection of WEH® Products and their configuration according to the requirements of your system. In doing so, please particularly consider your intended use, your performance data, your material compatibility, your system concept and your system limits as well as your technical and legal requirements for operation, handling and maintenance. The quality and safety of WEH® Products is our highest priority. For this reason, WEH® Products may not be used outside the specifications in the relevant data sheets and product descriptions. We also strongly recommend that you refrain from using third-party spare parts or a combination of WEH® Products with unsuitable third-party products. You alone are responsible for reviewing the suitability of third-party products. WEH® Products and WEH® Spare parts comply with our quality and safety standards.

Explanation on the Pressure Equipment Directive

These WEH® Products are generally and exclusively classified as pressure accessories for piping in accordance with Article 2 (5) of the Pressure Equipment Directive 2014/68/EU. These WEH® Products may not be used (i) as safety accessories or (ii) for vessels as defined by the Pressure Equipment Directive 2014/68/EU. Therefore, the application of these WEH® Products must comply with their classification as pressure accessories for piping. The assessment with regard to a different classification can, however, be made on request.

External change management

WEH reserves the right to update, optimise and adjust its products continuously. This may result in corresponding changes of the product. Customers will be informed proactively or unsolicited by WEH only in individual cases about product updates, product optimisations and/or product adaptations that have been carried out. You are free to contact WEH at any time to request information about any product updates, product optimisations and/or product adjustments.

© All rights reserved, WEH GmbH. Any unauthorized use is strictly forbidden. Subject to alteration.
 No liability will be assumed for any content. Herewith previous versions are no longer valid.

» Contact

For queries and further information, please do not hesitate to contact us.

Manufacturer:

WEH GmbH Gas Technology

Josef-Henle-Str. 1
 89257 Illertissen / Germany

Phone: +49 7303 95190-0
 Fax: +49 7303 95190-9999

Email: ngvsales@weh.com
www.weh.com



Distributor US:

WEH Technologies Inc.

24903 Laguna Edge Drive
 Katy, TX 77494 / USA

Phone: +1 832 331 0021
 Fax: +1 281 712 2664

Email: sales@weh.us
www.weh.us